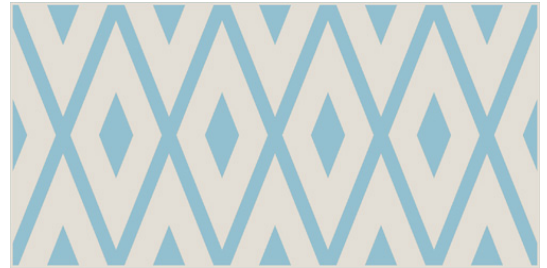


Model: Montmartre Celeste
 Size: 10X20 cm (3.9x7.9 in)
 Thickness: 7.5mm
 Material type: Red Body



TECHNICAL DATA

Manufacture process	Single-firing	Dry pressed ceramic tile
Length, width, thickness, side straightness, orthogonality, flatness	Conforms to the requisites applicable to each model as defined in standard UNE-EN 14411 for Group BIII annex L	UNE EN ISO 10545 Part 2
Water absorption	E > 10%	UNE EN ISO 10545 Part 3
Flexion resistance (N/mm.2) and breaking strength (N)	> 15 > 600	UNE EN ISO 10545 Part 4
Lineal thermic dilatation	< 7*10 ⁻⁶ /°C	UNE EN ISO 10545 Part 8
Thermic impact resistance	Stands the test	UNE EN ISO 10545 Part 9
Expansion due to moisture	< 0.6%	UNE EN ISO 10545 Part 10
Cracking resistance	Stands the test	UNE EN ISO 10545 Part 11

CHEMICAL RESISTANCE

Domestic cleaning products	Class GA	UNE EN ISO 10545 Part 13
Swimming pool salt	Class GA	
Acids and bases (low concentration)	Minimum Class GLB	UNE EN ISO 10545 Part 14
Stains resistance	Minimum Class 4	

CE MARKING



CE Declaration of performance:

Nº 003VV2013