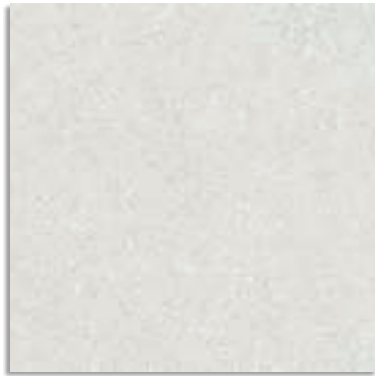




60x60 cm. 23.6x23.6 inches

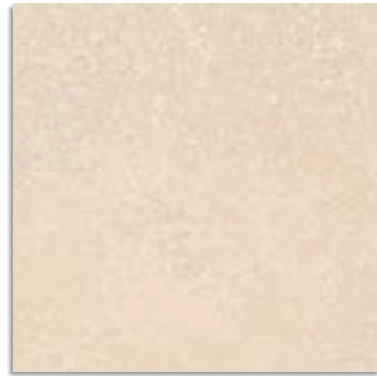


59,3x59,3 cm. 23.3x23.3 inches



Beta Light
G.229

Beta-R Light
G.230



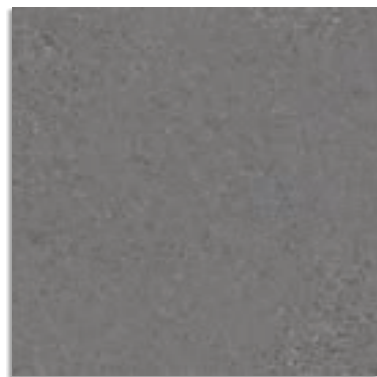
Beta Beige
G.229

Beta-R Beige
G.230



Beta Cemento
G.229

Beta-R Cemento
G.230



Beta Plomo
G.229

Beta-R Plomo
G.230



Beta Jeans
G.229

Beta-R Jeans
G.230



(1) Anidros
G.229

Anidros-R
G.230

(1) Este modelo está compuesto por diseños diferentes para combinar de modo alterno, se sirven en la misma caja. This model has different designs that are combined alternately, coming in the same box.

El peldaño y el gradone pueden servirse con o sin rayado de hendidura. También disponibles en ángulo. The Step Tread and gradone can be sold with or without the ribbed notch. Angle is also available.

ANTIDESLIZANTE. Con el fin de dar una mayor seguridad en aquellas áreas transitables, cuyas condiciones de humedad y pendientes son mayores de lo habitual, hemos realizado las pruebas de ensayo según las normas: UNE 41901:2017 EX, UNE 41902:2017 EX, DIN 51130, DIN 51097, DCOF, BS 7976-2:2002. Para más información, consultar nuestro departamento técnico.

SLIP RESISTANCE. With the purpose of providing increased safety in areas of pedestrian foot traffic where moisture and/or slopes are greater than normal, we have carried out tests according to the norms: UNE 41901:2017 EX, UNE 41902:2017 EX, DIN 51130, DIN 51097, DCOF, BS 7976-2:2002. For more information on this, contact our Technical Department.



CL 2
R 9
CL C
+ 0.42
+ 36

| BETA | | CAJA / BOX | | | | | | PALET / PALLET | | | |
|------|-------|---------------|------------------|-----------------|----------------|-------|-------|----------------|----------------|--------|---------|
| | | FORMATOS | SIZE | PIEZAS / PIECES | M ² | ML | KG | CAJA / BOX | M ² | ML | KG |
| | 8,8 | 60x60 cm. | 23.6x23.6 inches | 4 | 1,44 | - | 28,7 | 36 | 51,84 | - | 1033,20 |
| | 8,8 | 59,3x59,3 cm. | 23.3x23.3 inches | 4 | 1,406 | - | 28,03 | 36 | 50,62 | - | 1089,08 |
| | G.47 | 9,4x60 cm. | 3.7x23.6 inches | 20 | - | 12 | 22,5 | 56 | - | 672 | 1260 |
| | G.48 | 9,4x59,3 cm. | 3.7x23.3 inches | 20 | - | 11,86 | 22,29 | 56 | - | 664,16 | 1248,24 |
| | G.78 | 33x60 cm. | 13x23.6 inches | 1 | - | 0,60 | 5,30 | - | - | - | - |
| | G.76 | 33x59,3 cm. | 13x23.3 inches | 1 | - | 0,59 | 5,27 | - | - | - | - |
| | G.89 | 33x60 cm. | 13x23.6 inches | 1 | - | 0,60 | 6,10 | - | - | - | - |
| | G.910 | 33x59,3 cm. | 13x23.3 inches | 1 | - | 0,59 | 6 | - | - | - | - |

