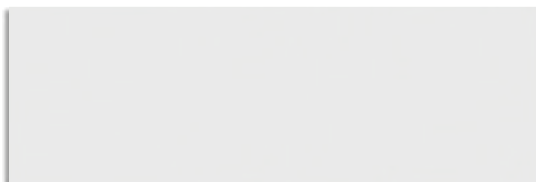
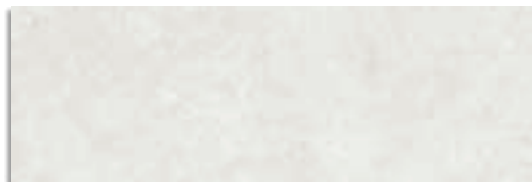


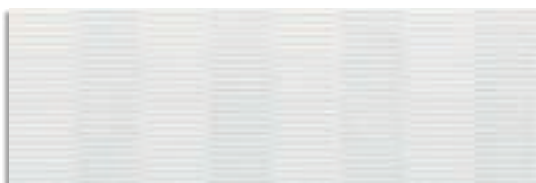
25x75 cm. 9.8x29.5 inches 



Omicron Nieve
G.134



Omicron Blanco
G.134



Tilos Nieve
G.248



Tilos Blanco
G.248



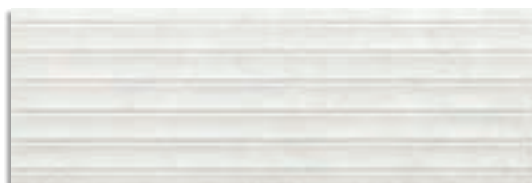
Citera Nieve
G.248



Citera Blanco
G.248



Kitnos Nieve
G.248



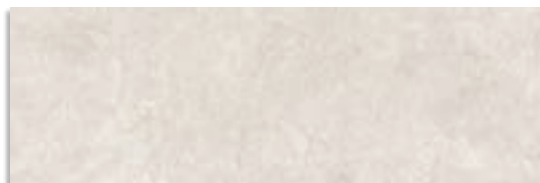
Kitnos Blanco
G.248



Symi Nieve
G.248



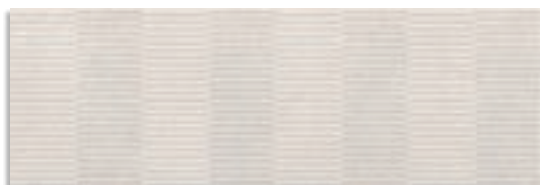
Symi Blanco
G.248



Omicron Crema
G.134



Omicron Gris
G.134



Tilos Crema
G.248



Tilos Gris
G.248



Citera Crema
G.248



Citera Gris
G.248



Kitnos Crema
G.248



Kitnos Gris
G.248



Symi Crema
G.248



Symi Gris
G.248

OMICRON				CAJA / BOX				PALET / PALLET			
		FORMATOS	SIZE	PIEZAS / PIECES	M ²	ML	KG	CAJA / BOX	M ²	ML	KG
	8,2	25x75 cm	9.8x29.5 inches	9	1,687	-	23,71	42	70,854	-	996
	8,2	25x75 cm Relieve	9.8x29.5 inches	9	1,687	-	22,73	42	70,854	-	955

25x75 cm. 9.8x29.5 inches 



(1) Sikinos Nieve
G.250



(1) Sikinos Blanco
G.250



Renea Nieve
G.250



Renea Blanco
G.250



(1) Telendos Nieve
G.250



(1) Telendos Blanco
G.250



Levitha Multicolor
G.249



Giaros Multicolor
G.249



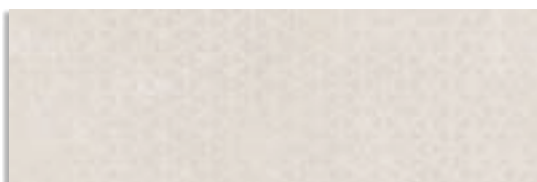
(1) Piperi Multicolor
G.249



(1) Sikinos Crema
G.250



(1) Sikinos Gris
G.250



Renea Crema
G.250



Renea Gris
G.250



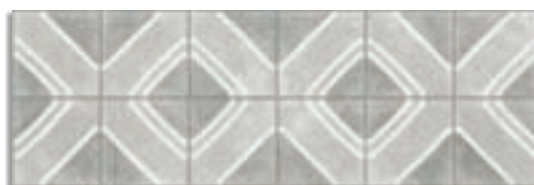
(1) Telendos Crema
G.250



(1) Telendos Gris
G.250



Romvi Blanco
G.249



Romvi Gris
G.249

(1) Este modelo está compuesto por diseños diferentes para combinar de modo alterno, se sirven en la misma caja.
This model has different designs that are combined alternately, coming in the same box.

OMICRON				CAJA / BOX				PALET / PALLET			
		FORMATOS	SIZE	PIEZAS / PIECES	M ²	ML	KG	CAJA / BOX	M ²	ML	KG
	8,2	25x75 cm	9.8x29.5 inches	9	1,687	-	23,71	42	70,854	-	996
	8,2	25x75 cm Relieve	9.8x29.5 inches	9	1,687	-	22,73	42	70,854	-	955





12,5x12,5 cm. 4.92x4.92 inches



Zante Nieve
12,5x12,5 cm.
G.245



Zante Blanco
12,5x12,5 cm.
G.245



Zante Crema
12,5x12,5 cm.
G.245



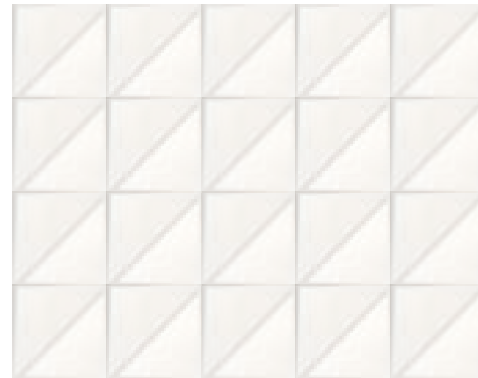
Zante Gris
12,5x12,5 cm.
G.245

MODOS DE COLOCACIÓN

FIXING MODES



A)



B)



C)



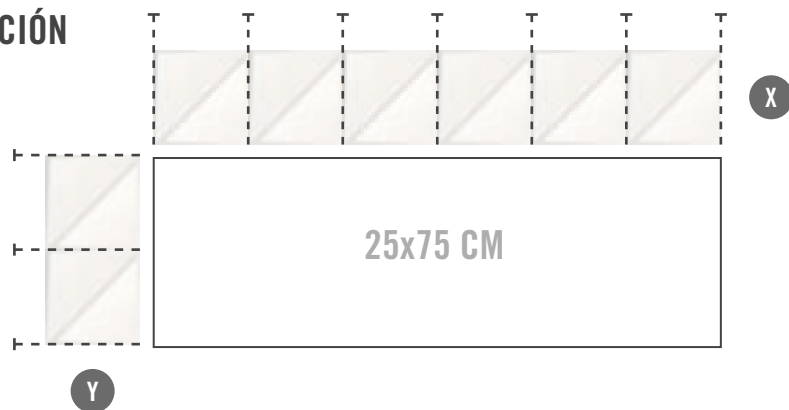
D)

INSTRUCCIONES DE COLOCACIÓN

FIXING INSTRUCTIONS

Al combinarse con el formato 25x75 cm debe tenerse en cuenta la variación de las juntas en la colocación horizontal (X) y en la vertical (Y).

When fixing together with the 25x75 size tile, you should be aware of the variation in the width of grout lines when fixing horizontally (X) and vertically (Y).



OMICRON		CAJA / BOX				PALET / PALLET					
		FORMATOS	SIZE	PIEZAS / PIECES	M ²	ML	KG	CAJA / BOX	M ²	ML	KG
<input type="checkbox"/>	8,2	12,5x12,5 cm.	4.92x4.92 inches	24	0,371	-	9,336	102	37,842	-	952,27



Kitnos Crema · 25x75 cm. / Delta -R Crema · 59,3x59,3 cm.

