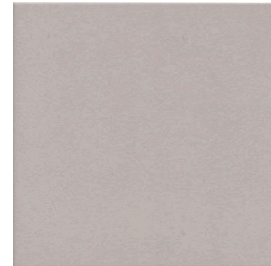


Model: Town Perla  
 Size: 31'6X31'6 cm (12.4x12.4 in)  
 Thickness: 9mm  
 Material type: Gres



## TECHNICAL DATA

|  |   |                          |
|--|---|--------------------------|
| Manufacture process  | Single-firing   | Dry pressed ceramic tile |
| Length, width, thickness, side straightness, orthogonality, flatness | Conforms to the requisites applicable to each model as defined in standard UNE-EN 14411 for Group B1b annex H | UNE EN ISO 10545 Part 2  |
| Water absorption   | $0.5\% < E < 3\%$   | UNE EN ISO 10545 Part 3  |
| Flexion resistance (N/mm.2) y and breaking strength (N)              | $> 30Nw/mm^2$<br>$> 1100Nw$   | UNE EN ISO 10545 Part 4  |
| Resistance to surface abrasion (Glazed tiles)                        | 3   | UNE EN ISO 10545 Part 7  |
| Lineal thermic dilatation  | $< 7 \cdot 10^{-6} / ^\circ C$  | UNE EN ISO 10545 Part 8  |
| Thermic impact resistance  | Stands the test   | UNE EN ISO 10545 Part 9  |
| Expansion due to moisture  | $< 0.6\%$   | UNE EN ISO 10545 Part 10 |
| Cracking resistance  | Stands the test   | UNE EN ISO 10545 Part 11 |
| Slip resistance  | Class 1   | UNE ENV 12633:2003       |

## CHEMICAL RESISTANCE

|                                     |                  |                          |
|-------------------------------------|------------------|--------------------------|
| Domestic cleaning products          | Class A          |                          |
| Swimming pool salt                  | Class A          | UNE EN ISO 10545 Part 13 |
| Acids and bases (low concentration) | Minimum Class LB |                          |
| Stains resistance                   | Minimum Class 4  | UNE EN ISO 10545 Part 14 |

## CE MARKING



CE Declaration of performance:

Nº 002VV2013