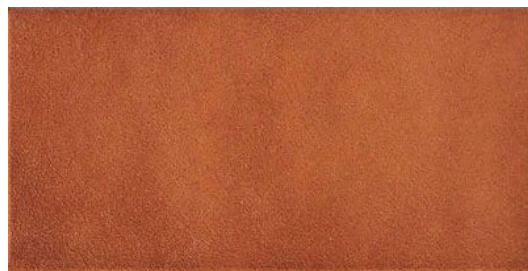


Model: Cobre

Size: 14X28 cm (5.5x11.0 in)

Thickness: 8mm

Material type: Gres



TECHNICAL DATA

Manufacture process	Single-firing	Dry pressed ceramic tile
Length, width, thickness, side straightness, orthogonality, flatness	Conforms to the requisites applicable to each model as defined in standard UNE-EN 14411 for Group B1b annex H	UNE EN ISO 10545 Part 2
Water absorption	$0.5\% < E < 3\%$	UNE EN ISO 10545 Part 3
Flexion resistance (N/mm.2) and breaking strength (N)	$> 30Nw/mm^2$ $> 1100Nw$	UNE EN ISO 10545 Part 4
Resistance to surface abrasion	2	UNE EN ISO 10545 Part 7
Lineal thermic dilatation	$< 7 \cdot 10^{-6} / ^\circ C$	UNE EN ISO 10545 Part 8
Thermic impact resistance	Stands the test	UNE EN ISO 10545 Part 9
Expansion due to moisture	$< 0.6\%$	UNE EN ISO 10545 Part 10
Cracking resistance	Stands the test	UNE EN ISO 10545 Part 11
Slip resistance	Class 1	UNE 41901 EX

CHEMICAL RESISTANCE

Domestic cleaning products	Class A	
Swimming pool salt	Class A	UNE EN ISO 10545 Part 13
Acids and bases (low concentration)	Minimum Class LB	
Stains resistance	Minimum Class 4	UNE EN ISO 10545 Part 14

CE MARKING



CE Declaration of performance:

Nº 002VV2013