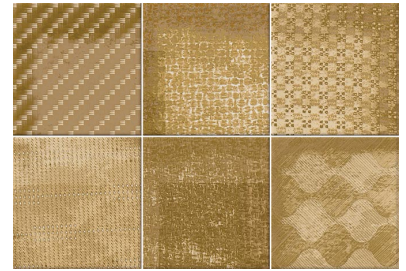


**VIVES**

# Haiku Caramelo 23x33,5 cm (9.1x13.2 in)

Model: Haiku Caramelo  
 Size: 23x33,5 cm (9.1x13.2 in)  
 Thickness: 9.1mm  
 Material type: White Body



## TECHNICAL DATA

Manufacture process	Single-firing	Dry pressed ceramic tile
Length, width, thickness, side straightness, ortogonality, flatness	Conforms to the requisites applicable to each model as defined in standard UNE-EN 14411 for Group BIII annex L	
Water absorption	E > 10%	UNE EN ISO 10545 Part 3
Flexion resistance (N/mm.2) y and breaking strength (N)	> 15Nw/mm <sup>2</sup> > 600Nw	UNE EN ISO 10545 Part 4
Lineal thermic dilatation	< 7*10 <sup>-6</sup> /°C	UNE EN ISO 10545 Part 8
Thermic impact resistance	Stands the test	UNE EN ISO 10545 Part 9
Expansion due to moisture	< 0.6%	UNE EN ISO 10545 Part 10
Cracking resistance	Stands the test	UNE EN ISO 10545 Part 11

## CHEMICAL RESISTANCE

Domestic cleaning products	Class A	UNE EN ISO 10545 Part 13
Swimming pool salt	Class A	
Acids and bases (low concentration)	Minimum Class LB	
Stains resistance	Minimum Class 4	UNE EN ISO 10545 Part 14

## CE MARKING



CE Declaration of performance:

Nº 003VV2019

IMPORTANT: before fixing tiles, please check the shade, calibre and choice. Claims regarding these items cannot be accepted once the material has been fixed. A minimum joint of 1 to 2 mm is required.  
 Document with commercial information and cannot be used either judicially or administratively without the express permission of VIVES Azulejos y Gres S.A.  
 The color of the tile of this data sheet is for guidance only and may differ from the actual tile color.

VIVES Azulejos y Gres, S.A. Ctra. Castellón Km. 23 · Apdo. correos, 14 · 12110 Alcora ( Castellón - Spain ) · Tel.: (+34) 964 36 07 25 · info@vivesceramica.com