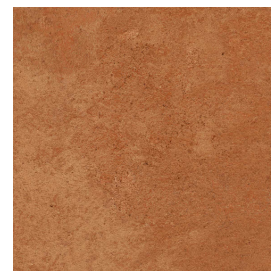


Model: Alarcon Cuero Antideslizante

Size: 30X30 cm (11.8x11.8 in)

Thickness: 7mm

Material type: Porcelain



## TECHNICAL DATA

Manufacture process	Single-firing	Dry pressed ceramic tile
Length, width, thickness, side straightness, orthogonality, flatness	Conforms to the requisites applicable to each model as defined in standard UNE-EN 14411 for Group BIa annex G	UNE EN ISO 10545 Part 2
Water absorption	E < 0.5%	UNE EN ISO 10545 Part 3
Flexion resistance (N/mm.2) and breaking strength (N)	> 35Nw/mm <sup>2</sup> > 1300Nw	UNE EN ISO 10545 Part 4
Resistance to surface abrasion (Glazed tiles)	2	UNE EN ISO 10545 Part 7
Lineal thermic dilatation	< 9*10 <sup>-6</sup> /°C	UNE EN ISO 10545 Part 8
Thermic impact resistance	Stands the test	UNE EN ISO 10545 Part 9
Cracking resistance	Stands the test	UNE EN ISO 10545 Part 11
Frost resistance	Stands the test	UNE EN ISO 10545 Part 12
Slip resistance	Class 3	UNE ENV 12633:2003
	R10	DIN 51130
	Class C	DIN 51097
	+36	BS-7976-2:2002 Pendulum

## CHEMICAL RESISTANCE

Domestic cleaning products	Class A	
Swimming pool salt	Class A	UNE EN ISO 10545 Part 13
Acids and bases (low concentration)	Minimum Class LB	
Stains resistance	Minimum Class 4	UNE EN ISO 10545 Part 14