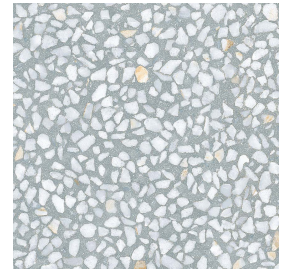


VIVES

Amalfi Mar 30x30 cm (11.8x11.8 in)



Model: Amalfi Mar

Size: 30x30 cm (11.8x11.8 in)

Thickness: 8.2mm

Material type: Porcelain

TECHNICAL DATA

Manufacture process	Single-firing	Dry pressed ceramic tile
Length, width, thickness, side straightness, ortogonality, flatness	Conforms to the requisites applicable to each model as defined in standard UNE-EN 14411 for Group Bla annex G	UNE EN ISO 10545 Part 2
Water absorption	E < 0.5%	UNE EN ISO 10545 Part 3
Flexion resistance (N/mm.2) and breaking strength (N)	> 35Nw/mm ² > 1300Nw	UNE EN ISO 10545 Part 4
Resistance to surface abrasion	3	UNE EN ISO 10545 Part 7
Lineal thermic dilatation	< 9*10 -6 /°C	UNE EN ISO 10545 Part 8
Thermic impact resistance	Stands the test	UNE EN ISO 10545 Part 9
Cracking resistance	Stands the test	UNE EN ISO 10545 Part 11
Frost resistance	Stands the test	UNE EN ISO 10545 Part 12
Slip resistance	Class 2	UNE 41901 EX
	R10	DIN 51130
	Class B	DIN 51097
	+36	BS-7976-2:2002 Pendulum

CHEMICAL RESISTANCE

Domestic cleaning products	Class A	UNE EN ISO 10545 Part 13
Swimming pool salt	Class A	
Acids and bases (low concentration)	Minimum Class LB	
Stains resistance	Minimum Class 4	UNE EN ISO 10545 Part 14

CE MARKING

CE Declaration of performance:
Nº 006VV2016