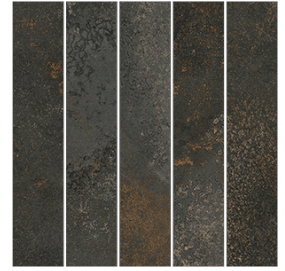


**VIVES**

# Mosaico Nahua NT Basalto 30x30 cm (11.8x11.8 in)



Model: Mosaico Nahua NT Basalto

Size: 30x30 cm (11.8x11.8 in)

Thickness:

Material type: Porcelain

## TECHNICAL DATA

Manufacture process	Single-firing	Dry pressed ceramic tile
Length, width, thickness, side straightness, ortogonality, flatness	Conforms to the requisites applicable to each model as defined in standard UNE-EN 14411 for Group Bla annex G	UNE EN ISO 10545 Part 2
Water absorption	$E < 0.5\%$	UNE EN ISO 10545 Part 3
Flexion resistance (N/mm.2) and breaking strength (N)	$> 35Nw/mm^2$ $> 1300Nw$	UNE EN ISO 10545 Part 4
Lineal thermic dilatation	$< 9*10^{-6} /^{\circ}C$	UNE EN ISO 10545 Part 8
Thermic impact resistance	Stands the test	UNE EN ISO 10545 Part 9
Cracking resistance	Stands the test	UNE EN ISO 10545 Part 11
Frost resistance	Stands the test	UNE EN ISO 10545 Part 12

## CHEMICAL RESISTANCE

Domestic cleaning products	Class A	UNE EN ISO 10545 Part 13
Swimming pool salt	Class A	
Acids and bases (low concentration)	Minimum Class LB	
Stains resistance	Minimum Class 4	UNE EN ISO 10545 Part 14

## CE MARKING



CE Declaration of performance:

Nº 001VV2019