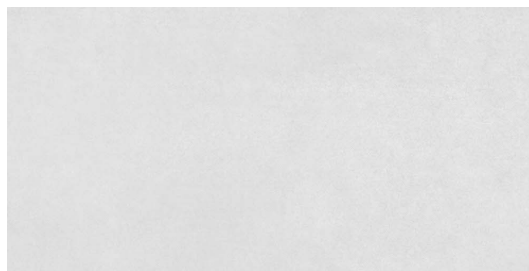


Model: Ruhr-SPR Blanco
 Size: 29'3X59'3 cm (11.5x23.3 in)
 Thickness: 9.5mm
 Material type: Porcelain



TECHNICAL DATA

Manufacture process	Single-firing	Dry pressed ceramic tile
Length, width, thickness, side straightness, orthogonality, flatness	Conforms to the requisites applicable to each model as defined in standard UNE-EN 14411 for Group Bla annex G	UNE EN ISO 10545 Part 2
Water absorption	E < 0.5%	UNE EN ISO 10545 Part 3
Flexion resistance (N/mm.2) and breaking strength (N)	> 35Nw/mm ² > 1300Nw	UNE EN ISO 10545 Part 4
Resistance to surface abrasion (Glazed tiles)	4	UNE EN ISO 10545 Part 7
Lineal thermic dilatation	< 9*10 -6 /°C	UNE EN ISO 10545 Part 8
Thermic impact resistance	Stands the test	UNE EN ISO 10545 Part 9
Cracking resistance	Stands the test	UNE EN ISO 10545 Part 11
Frost resistance	Stands the test	UNE EN ISO 10545 Part 12
Slip resistance	Class 1	UNE ENV 12633:2003

CHEMICAL RESISTANCE

Domestic cleaning products	Class A	
Swimming pool salt	Class A	UNE EN ISO 10545 Part 13
Acids and bases (low concentration)	Minimum Class LB	
Stains resistance	Minimum Class 4	UNE EN ISO 10545 Part 14

CE MARKING



CE Declaration of performance:

Nº 001VV2013