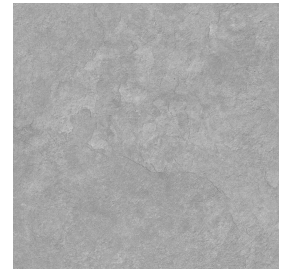


VIVES

Delta Cemento Antideslizante 60x60 cm (23.6x23.6 in)



Model: Delta Cemento Antideslizante

Size: 60x60 cm (23.6x23.6 in)

Thickness: 9mm

Material type: Porcelain

TECHNICAL DATA

Manufacture process	Single-firing	Dry pressed ceramic tile
Length, width, thickness, side straightness, ortogonality, flatness	Conforms to the requisites applicable to each model as defined in standard UNE-EN 14411 for Group Bla annex G	
Water absorption	E < 0.5%	UNE EN ISO 10545 Part 3
Flexion resistance (N/mm.2) y and breaking strength (N)	> 35Nw/mm ² > 1300Nw	UNE EN ISO 10545 Part 4
Resistance to surface abrasion	4	UNE EN ISO 10545 Part 7
Lineal thermic dilatation	< 9*10 ⁻⁶ /°C	UNE EN ISO 10545 Part 8
Thermic impact resistance	Stands the test	UNE EN ISO 10545 Part 9
Cracking resistance	Stands the test	UNE EN ISO 10545 Part 11
Frost resistance	Stands the test	UNE EN ISO 10545 Part 12
Slip resistance	Class 3	UNE 41901 EX
	R13	DIN 51130
	Class C	DIN 51097
	+36	BS-7976-2:2002 Pendulum

CHEMICAL RESISTANCE

Domestic cleaning products	Class A	UNE EN ISO 10545 Part 13
Swimming pool salt	Class A	
Acids and bases (low concentration)	Minimum Class LB	
Stains resistance	Minimum Class 4	UNE EN ISO 10545 Part 14

ENVIRONMENTAL INFORMATION (LEED RATING SYSTEM)

MR- Material & Resources Recycled Content (% Preconsumer)	> 37%	Credit 4.1-4.2
EQ- Indoor Envimetal Quality Low emitting materials	No VOCs emission	Credit 4
SS- Sustainable Sites Heat Island Effect	Light color SRI > 29	Credit 7
EA- Energy & Atmosphere Energy Performance	1,3 a 2,0 (W/mk)	Prerequisite 2 - Credit 1

CE MARKING



CE Declaration of performance:

Nº 001VV2019



IMPORTANT: before fixing tiles, please check the shade, calibre and choice. Claims regarding these items cannot be accepted once the material has been fixed. A minimum joint of 1 to 2 mm is required.
Document with commercial information and cannot be used either judicially or administratively without the express permission of VIVES Azulejos y Gres S.A.
The color of the tile of this data sheet is for guidance only and may differ from the actual tile color.

VIVES Azulejos y Gres, S.A. Ctra. Castellón Km. 23 · Apdo. correos, 14 · 12110 Alcora (Castellón - Spain) · Tel.: (+34) 964 36 07 25 · info@vivesceramica.com