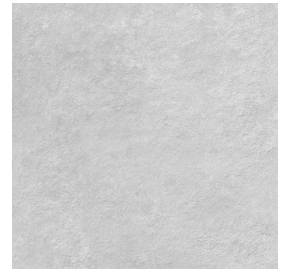


VIVES

Delta Gris Antideslizante 60x60 cm (23.6x23.6 in)



Model: Delta Gris Antideslizante

Size: 60x60 cm (23.6x23.6 in)

Thickness: 9mm

Material type: Porcelain

TECHNICAL DATA

| | | |
|---|---|--------------------------|
| Manufacture process | Single-firing | Dry pressed ceramic tile |
| Length, width, thickness, side straightness, ortogonality, flatness | Conforms to the requisites applicable to each model as defined in standard UNE-EN 14411 for Group Bla annex G | |
| Water absorption | E < 0.5% | UNE EN ISO 10545 Part 3 |
| Flexion resistance (N/mm.2) y and breaking strength (N) | > 35Nw/mm ² > 1300Nw | UNE EN ISO 10545 Part 4 |
| Resistance to surface abrasion | 4 | UNE EN ISO 10545 Part 7 |
| Lineal thermic dilatation | < 9*10 ⁻⁶ /°C | UNE EN ISO 10545 Part 8 |
| Thermic impact resistance | Stands the test | UNE EN ISO 10545 Part 9 |
| Cracking resistance | Stands the test | UNE EN ISO 10545 Part 11 |
| Frost resistance | Stands the test | UNE EN ISO 10545 Part 12 |
| Slip resistance | Class 3 | UNE 41901 EX |
| | R13 | DIN 51130 |
| | Class C | DIN 51097 |
| | +36 | BS-7976-2:2002 Pendulum |

CHEMICAL RESISTANCE

| | | |
|-------------------------------------|------------------|--------------------------|
| Domestic cleaning products | Class A | UNE EN ISO 10545 Part 13 |
| Swimming pool salt | Class A | |
| Acids and bases (low concentration) | Minimum Class LB | |
| Stains resistance | Minimum Class 4 | UNE EN ISO 10545 Part 14 |

ENVIRONMENTAL INFORMATION (LEED RATING SYSTEM)

| | | |
|---|----------------------|---------------------------|
| MR- Material & Resources Recycled Content (% Preconsumer) | > 37% | Credit 4.1-4.2 |
| EQ- Indoor Envimetal Quality Low emitting materials | No VOCs emission | Credit 4 |
| SS- Sustainable Sites Heat Island Effect | Light color SRI > 29 | Credit 7 |
| EA- Energy & Atmosphere Energy Performance | 1,3 a 2,0 (W/mk) | Prerequisite 2 - Credit 1 |

CE MARKING



CE Declaration of performance:

Nº 001VV2019



IMPORTANT: before fixing tiles, please check the shade, calibre and choice. Claims regarding these items cannot be accepted once the material has been fixed. A minimum joint of 1 to 2 mm is required.
Document with commercial information and cannot be used either judicially or administratively without the express permission of VIVES Azulejos y Gres S.A.
The color of the tile of this data sheet is for guidance only and may differ from the actual tile color.

VIVES Azulejos y Gres, S.A. Ctra. Castellón Km. 23 · Apdo. correos, 14 · 12110 Alcora (Castellón - Spain) · Tel.: (+34) 964 36 07 25 · info@vivesceramica.com