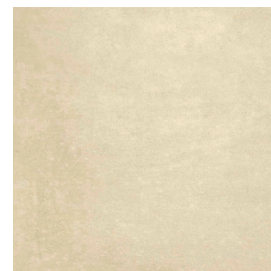


Model: Ruhr-SPR Crema
 Size: 59'3X59'3 cm (23.3x23.3 in)
 Thickness: 10mm
 Material type: Porcelain



TECHNICAL DATA

| | | |
|--|---|--------------------------|
| Manufacture process | Single-firing | Dry pressed ceramic tile |
| Length, width, thickness, side straightness, orthogonality, flatness | Conforms to the requisites applicable to each model as defined in standard UNE-EN 14411 for Group BIa annex G | UNE EN ISO 10545 Part 2 |
| Water absorption | $E < 0.5\%$ | UNE EN ISO 10545 Part 3 |
| Flexion resistance (N/mm.2) and breaking strength (N) | $> 35Nw/mm^2$ $> 1300Nw$ | UNE EN ISO 10545 Part 4 |
| Resistance to surface abrasion | 4 | UNE EN ISO 10545 Part 7 |
| Lineal thermic dilatation | $< 9 \cdot 10^{-6} / ^\circ C$ | UNE EN ISO 10545 Part 8 |
| Thermic impact resistance | Stands the test | UNE EN ISO 10545 Part 9 |
| Cracking resistance | Stands the test | UNE EN ISO 10545 Part 11 |
| Frost resistance | Stands the test | UNE EN ISO 10545 Part 12 |
| Slip resistance | Class 1 | UNE 41901 EX |

CHEMICAL RESISTANCE

| | | |
|-------------------------------------|------------------|--------------------------|
| Domestic cleaning products | Class A | |
| Swimming pool salt | Class A | UNE EN ISO 10545 Part 13 |
| Acids and bases (low concentration) | Minimum Class LB | |
| Stains resistance | Minimum Class 4 | UNE EN ISO 10545 Part 14 |

CE MARKING



CE Declaration of performance:

Nº 001VV2019