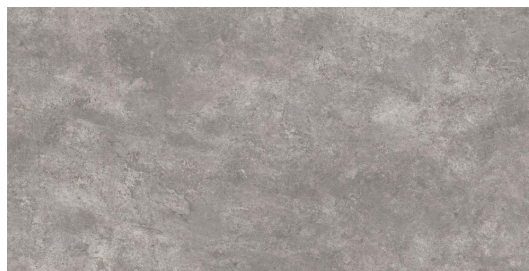


Model: Civic-SPR Grafito
 Size: 59'3X119'3 cm (23.3x47.0 in)
 Thickness: 11mm
 Material type: Porcelain



TECHNICAL DATA

Manufacture process	Single-firing	Dry pressed ceramic tile
Length, width, thickness, side straightness, orthogonality, flatness	Conforms to the requisites applicable to each model as defined in standard UNE-EN 14411 for Group BIa annex G	UNE EN ISO 10545 Part 2
Water absorption	$E < 0.5\%$	UNE EN ISO 10545 Part 3
Flexion resistance (N/mm.2) and breaking strength (N)	$> 35\text{Nw/mm}^2$ $> 1300\text{Nw}$	UNE EN ISO 10545 Part 4
Resistance to surface abrasion	3	UNE EN ISO 10545 Part 7
Lineal thermic dilatation	$< 9 \cdot 10^{-6} / ^\circ\text{C}$	UNE EN ISO 10545 Part 8
Thermic impact resistance	Stands the test	UNE EN ISO 10545 Part 9
Cracking resistance	Stands the test	UNE EN ISO 10545 Part 11
Frost resistance	Stands the test	UNE EN ISO 10545 Part 12
Slip resistance	Class 1	UNE 41901 EX

CHEMICAL RESISTANCE

Domestic cleaning products	Class A	
Swimming pool salt	Class A	UNE EN ISO 10545 Part 13
Acids and bases (low concentration)	Minimum Class LB	
Stains resistance	Minimum Class 4	UNE EN ISO 10545 Part 14

CE MARKING



CE Declaration of performance:

Nº 001VV2013