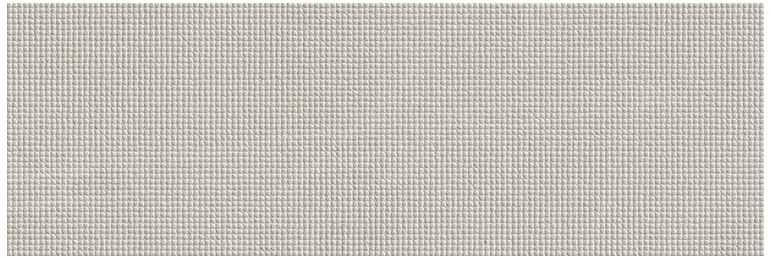


Model: Marne-R Perla
 Size: 32X99 cm (12.6x39.0 in)
 Thickness: 11mm
 Material type: White Body



TECHNICAL DATA

Manufacture process	Single-firing	Dry pressed ceramic tile
Length, width, thickness, side straightness, orthogonality, flatness	Conforms to the requisites applicable to each model as defined in standard UNE-EN 14411 for Group BIII annex L	UNE EN ISO 10545 Part 2
Water absorption	E > 10%	UNE EN ISO 10545 Part 3
Flexion resistance (N/mm.2) and breaking strength (N)	> 15Nw/mm ² > 600Nw	UNE EN ISO 10545 Part 4
Lineal thermic dilatation	< 7*10 ⁻⁶ /°C	UNE EN ISO 10545 Part 8
Thermic impact resistance	Stands the test	UNE EN ISO 10545 Part 9
Expansion due to moisture	< 0.6%	UNE EN ISO 10545 Part 10
Cracking resistance	Stands the test	UNE EN ISO 10545 Part 11

CHEMICAL RESISTANCE

Domestic cleaning products	Class A	
Swimming pool salt	Class A	UNE EN ISO 10545 Part 13
Acids and bases (low concentration)	Minimum Class LB	
Stains resistance	Minimum Class 4	UNE EN ISO 10545 Part 14

CE MARKING



CE Declaration of performance:

Nº 003VV2013